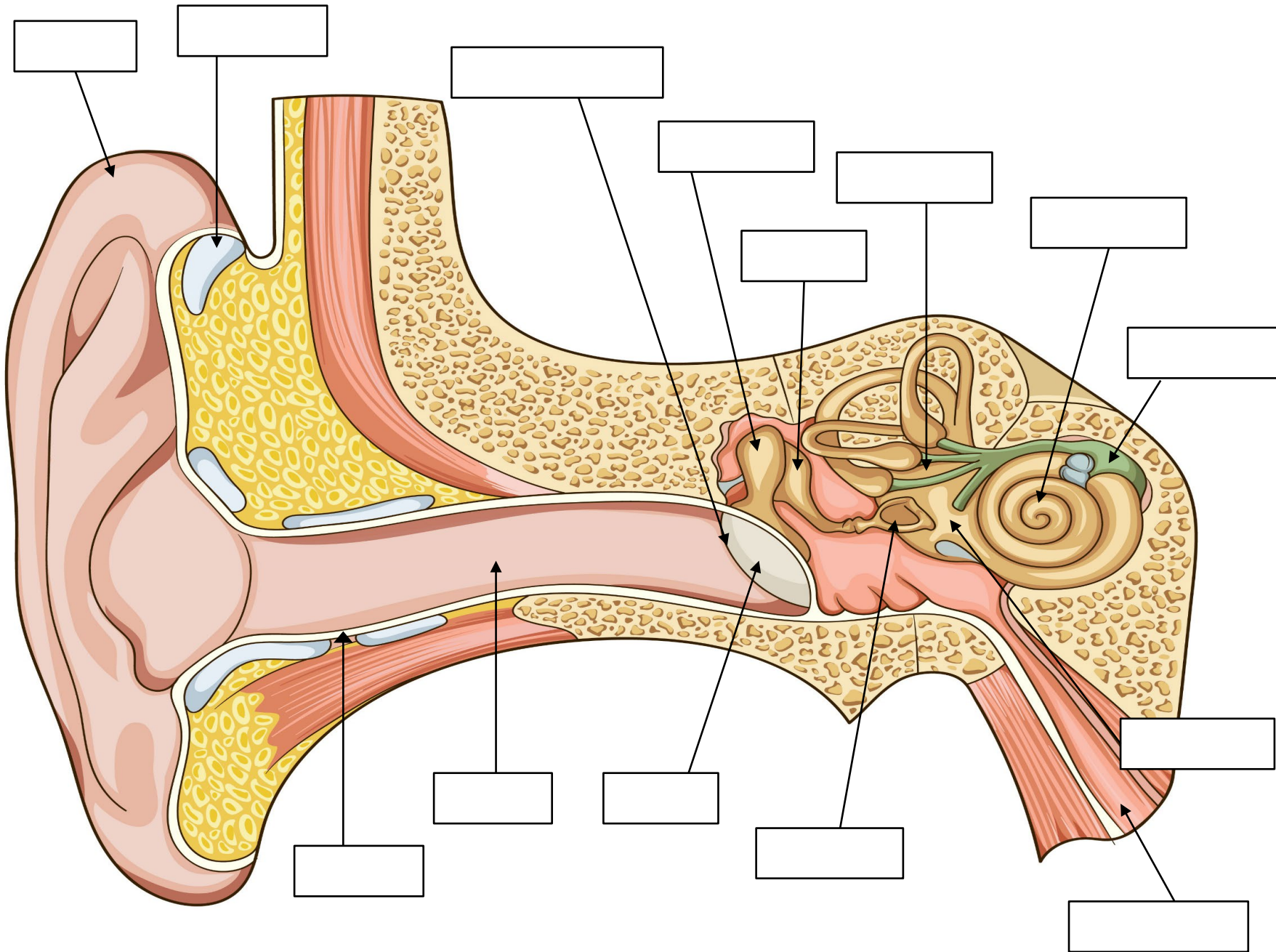


Label the parts of the ear.



Outer Ear

Pinna

Cartilage

Ear Canal

Wax Glands

Tympanic
Membrane

Middle Ear

Stirrup (Stapes)

Eustachian
Tube

Ear Drum

Anvil (Incus)

Hammer (Malleus)

Inner Ear

Semi-circular
canals

Cochlea

Auditory
Nerve

Vestibule